

## COMPACT DOMESTIC HOT WATER HEAT EXCHANGERS FROM THE TECHNICAL SERVICE DEPARTMENT Effective November 1, 1993

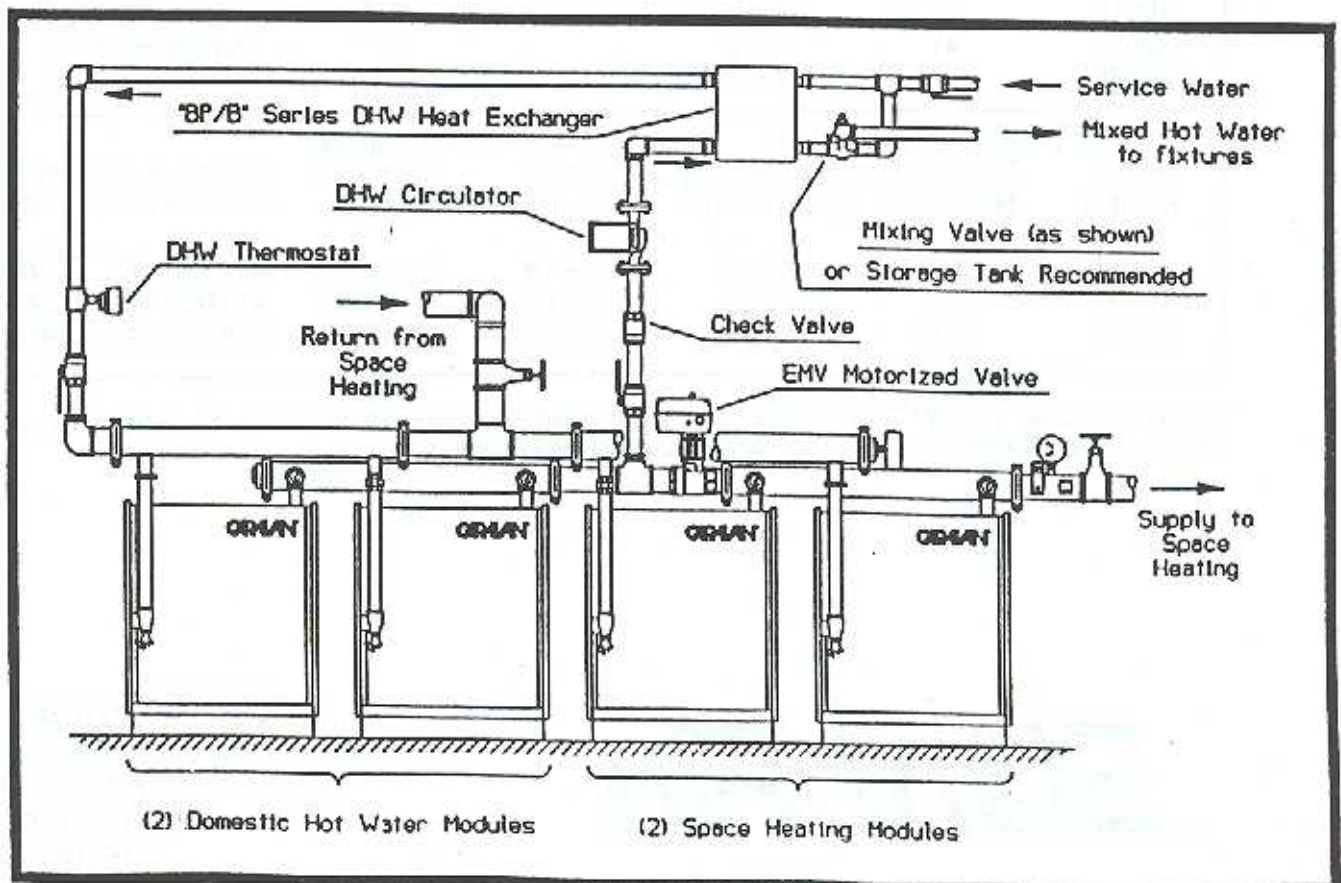
This announces the "BP/B" Series Compact Domestic Hot Water Heat Exchangers, the low-cost alternative to Shell-and-Tubes.

### "BP/B" Series Heat Exchangers - Standard Features

- #316 Stainless Steel Construction - Long Life
- 450 psig Working Pressure - Highly Durable
- Insulated Stainless Jacket - Low Heat Loss
- Light Weight & Compact - Easy Handling
- No tube-pulling space required

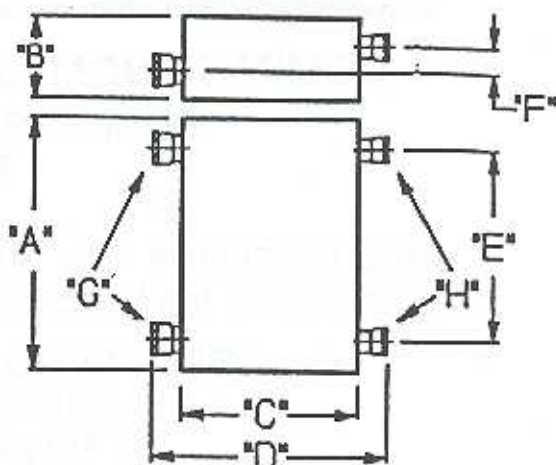
The BP-1B Heat Exchanger is designed to carry the entire output of one gas-fired or one oil-fired Caravan module. Likewise, the BP-2B is designed for use with two modules, and the BP-3B is for three. Shown below is a typical Caravan installation with two modules for Domestic Hot Water.

### TYPICAL FOUR MODULE CARAVAN SYSTEM WITH TWO MODULES FOR DOMESTIC HOT WATER



## Dimensions

	BP1B	BP2B	BP3B
"A"	14 1/2"	13 1/4"	13 1/4"
"B"	4 3/4"	6 1/2"	6 1/2"
"C"	10"	11"	13 1/4"
"D"	13 1/2"	15"	17 1/4"
"E"	11"	9 3/8"	9 3/8"
"F"	1 1/2"	2 7/8"	2 7/8"
Boiler "G"	1 1/2" FPT	2" FPT	2" FPT
DHW "H"	1" FPT	1 1/4" FPT	1 1/2" FPT



Ratings and Prices						
Model Number	Max GPH 40-140°F	Max Boiler Output MBTUH	Number of Modules	Filled Weight	Order Code	Trade Price
BP-1B	411	342	1	8.5 lbs.	401-231	\$663
BP-2B	821	684	2	22.6 lbs.	401-232	1,047
BP-3B	1232	1026	3	32.3 lbs.	401-233	1,278

Boiler Side Design Specifications				
Model Number	Required Pump GPM	Required Pump Head	Recommended Pipe Size	Pump Selection
BP-1B	21	5.6 ft	1 1/2"	Armstrong S-25
BP-2B	41	5.1 ft	2"	Armstrong S-35
BP-3B	57	7.5 ft	2"	Armstrong S-45

DHW Side Design Specifications			Recommended Controls			
Model Number	GPH Output (40°-140°F)	Pressure Drop @GPH Output	Model Number	Motorized Valve	DHW Thermostat Instantaneous	DHW ThermoStat Storage
BP-1B	411	2.0 psi	BP-1B	EMV-II-1 1/2"	A19ABC-12C	T678A-1353
BP-2B	821	1.6 psi	BP-2B	EMV-II-2"	A19ABC-12C	T678A-1353
BP-3B	1232	2.0 psi	BP-3B	EMV-II-2"	A19ABC-12C	T678A-1353

Motorized Valves & DHW Thermostats: See latest Slant/Fin Trade Price Book for Ordering Information and Prices. Mixing Valves &/or Storage Tanks are provided by others.

# Slant/Fin®

SLANT/FIN CORPORATION  
 100 Forest Drive, Greenvale, NY 11548  
 Technical Service Department  
 516-484-0207 Voice  
 516-484-6958 FAX